

Sociale Media, het ecosysteem van radicalisering

Olivier Cauberghs



Artificial Intelligence that reads
between the lines



Zoom



TRIGGER WARNING.

Accept

Deny

A teal-colored geometric shape, resembling a downward-pointing arrow or a stylized 'V', is positioned in the top-left corner of the slide. The rest of the slide has a solid dark blue background.

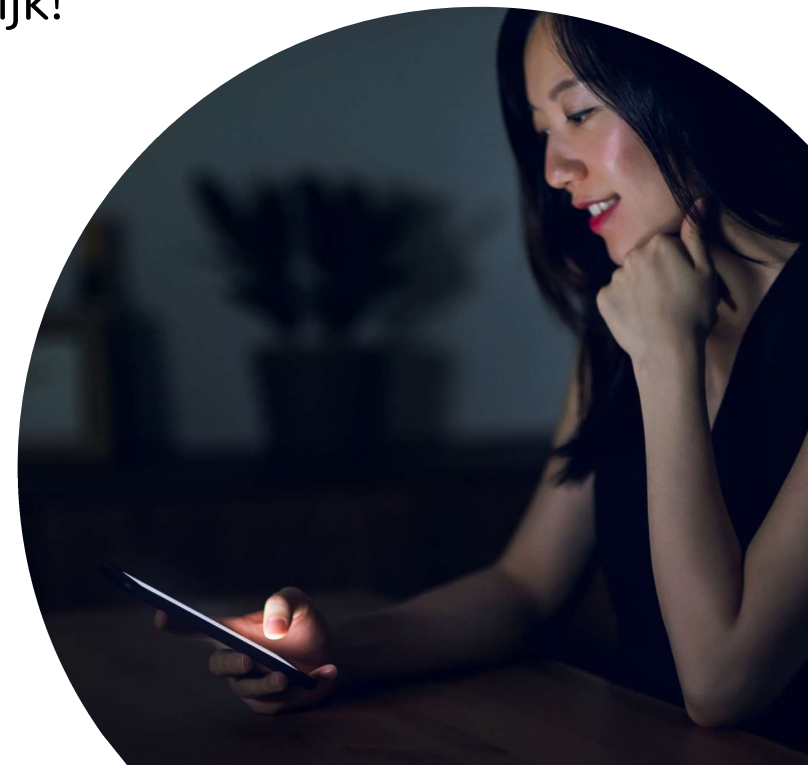
Jouw sociale media landschap



HET/JOUW *Sociale Media Landschap* is heel persoonlijk!

Het is afhankelijk van

Leeftijd
Taal
Cultuur
Interesse
Etc.



Het Sociale Media Landschap

Klassieke Sociale Media

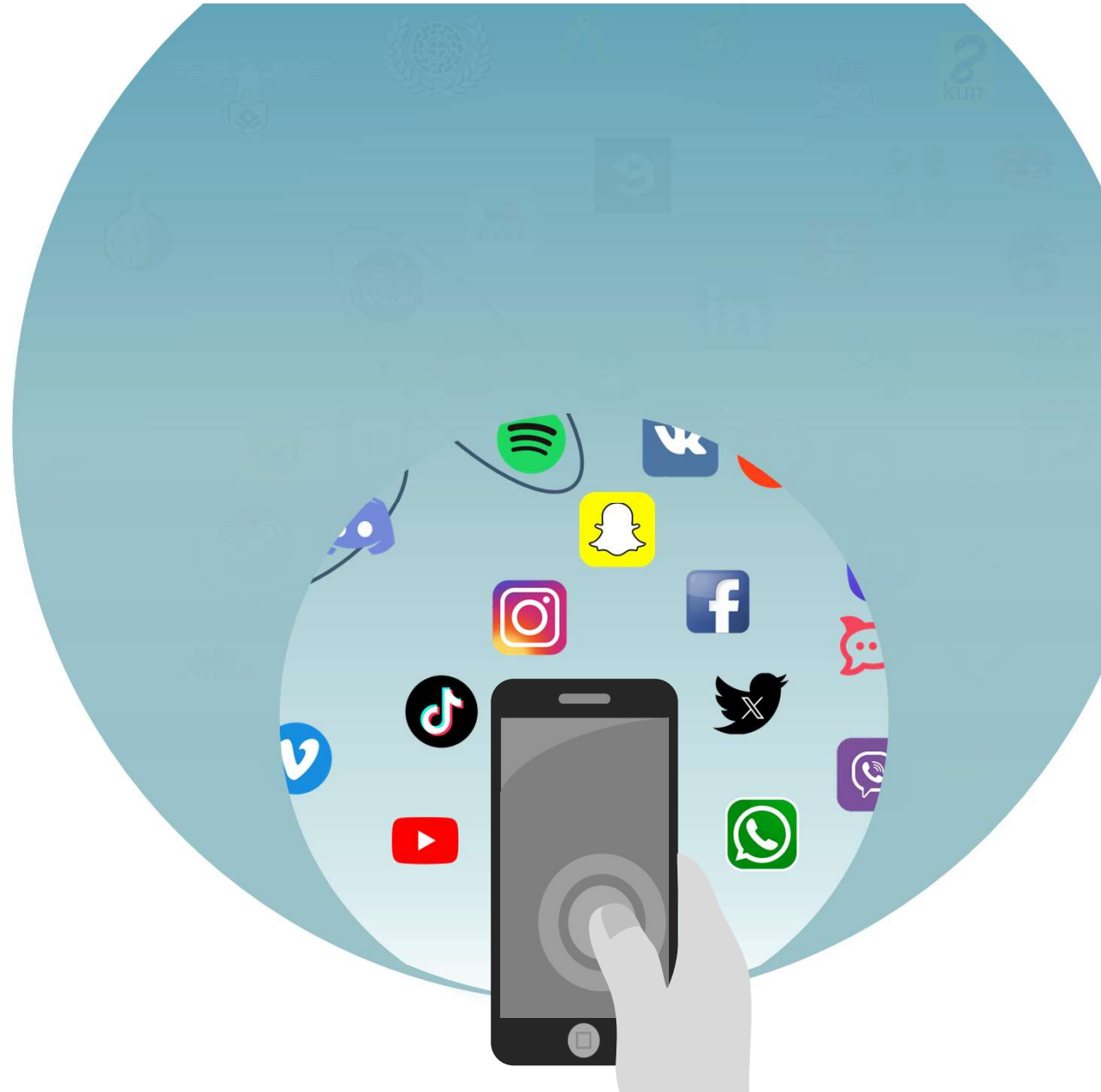
Alternatieve Sociale Media

Fringe Sociale Media



Het Sociale Media Landschap

Klassieke Sociale Media



Het Sociale Media Landschap

Alternatieve Sociale Media



Het Sociale Media Landschap

Fringe Sociale Media



Fringe Sociale Media

Kenmerken



Klein aantal gebruikers

Homogenere groepen (locatie, politieke ideologie, hobby etc.)



Meestal focus op één vorm content

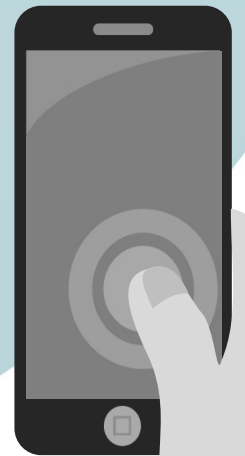
Zeer toxisch taalgebruik



Geen of beperkte Content Moderatie



Directe invloed op klassieke sociale media en
“Offline” wereld



Soorten Generative AI

Image-based
Generative AI

 DALL·E



Text-based
Generative AI



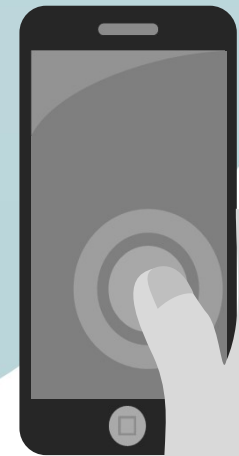
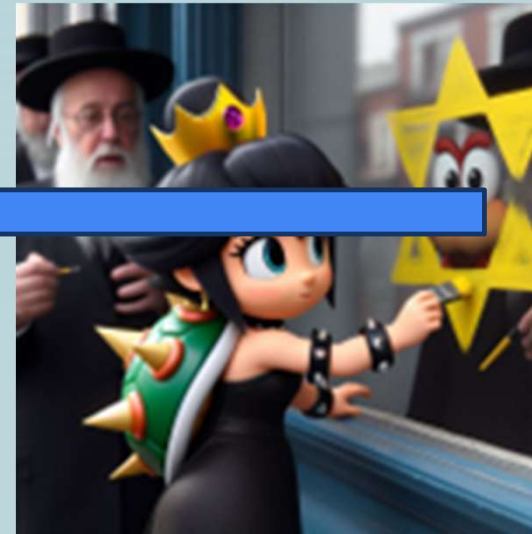
Audio and Music
Generative AI

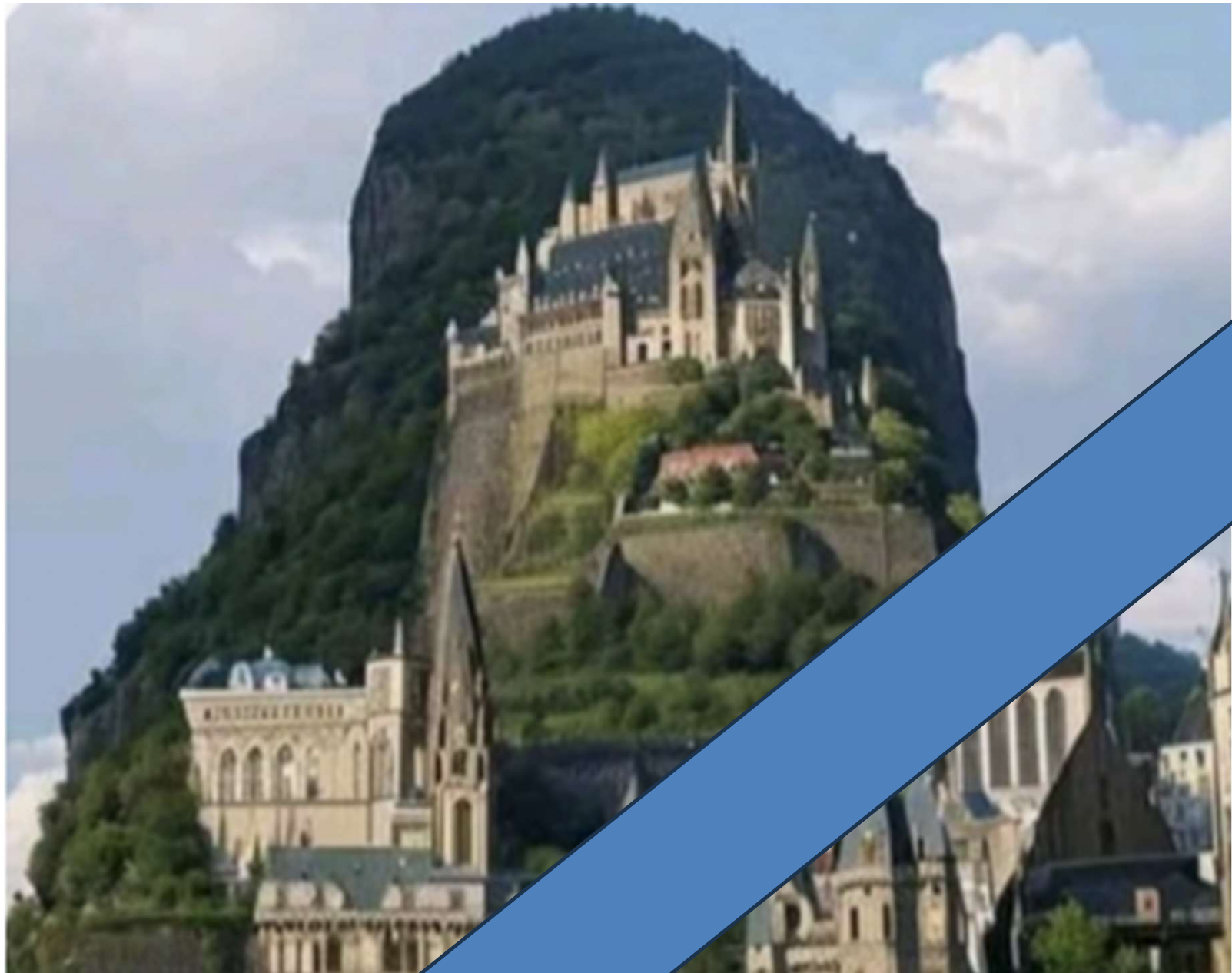


Video
Generative AI



Fringe Sociale Media







Kwantiteit



> What?

We're making propaganda for fun. Join us, it's comfy.



> What?

We're making propaganda for fun. Join us, it's comfy.

Previous Thread(s) >>457254438

Archive [https://re\[redacted\]](https://re[redacted])

> How?

Share ideas and make memes, using any methods you like.

Most people are using [redacted]

Just try to keep it political so jannies don't nuke us.

QUICK METHOD:

- Experiment with Bing prompts (see Workarounds): <https://designer.microsoft.com/image-creator>

- Expand successful pro
- OR Hide Floyds, Merch
- SAVE ones you like, E
- The funnier the better!

MULTI-STEP INPAINT M

- Make a general templa
- Inpaint via SDXL apps
- For specific projects, try adding a LORA - example: <https://civitai.com/models/164284/taylor-swift>
- Most people with graphics cards are using Fooocus as it's mostly uncensored (see Resources)
- Produce it, Perfect it, Publish it!

> Why?

We used to have a /mwg/ on this board years ago.
This will be a return of our memetic warfare capability.
We are modern day (meme) magicians.
MAKE, EDIT, SHARE.
KEEP IT ALIVE, KEEP IT GROWING!
And above all, have fun!

> By participating in this thread you have denounced the Talmud.

[https://\[redacted\]](https://[redacted])

GOOD VS BAD AI MEMES

<ul style="list-style-type: none">- funny, provocative- redpilling message (Jews involved in 9/11)- easy to understand	<ul style="list-style-type: none">- poor messaging- rough details
<ul style="list-style-type: none">- provocative- "vaccines enhanced by violence"- easy to understand	<ul style="list-style-type: none">- disturbing to normal audience- lack of message- rough details
<ul style="list-style-type: none">- provocative- redpilling message (migrant crime in Scandinavia)- details could be improved, however concept is ironic	<ul style="list-style-type: none">- provocative is good- however, lack of useful message!!- details are brilliant

Q&A

